

**ANSELAN PRECISION MACHINERY CO., LTD.**

Address: No. 539 Wanjiadi Rd., Yuhua District, Changsha, 410019, China

Mobile: +86 - 18267497809 (WhatsApp ID/WeChat ID)

Skype: edmservicechina

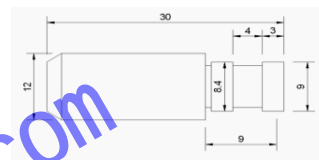
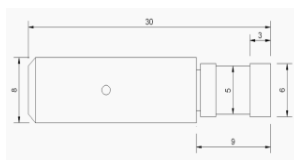
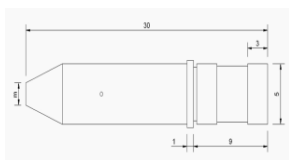
E-mail: anselanedm@163.com

Website: www.anselanedm.com

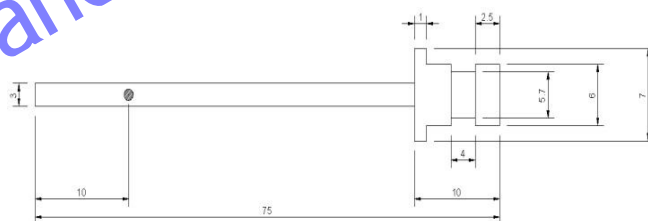


**High speed drilling EDM**

**Standard dual-A. B, single-C type**



**Special dual - L type**



**TS type - Sodick**



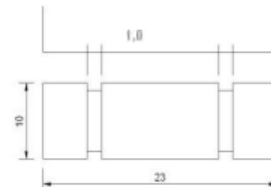
- A. Stainless housing + Ceramic insert
- B. Stainless housing + Ruby insert



**TSS type - Charmilles & Sodick**



- A. Ceramic housing + Sapphire insert
- B. Ceramic housing + Ruby insert
- C. Stainless housing + Ceramic insert
- D. Stainless housing + Ruby insert



**HD type - Agie (Ø12xØ16x35H)**



- A. Stainless housing + Ceramic insert
- B. Stainless housing + Ruby insert

# ANSELAN PRECISION MACHINERY CO., LTD.

Address: No. 539 Wanjiadi Rd., Yuhua District, Changsha, 410019, China

Mobile: +86 - 18267497809 (WhatsApp ID/WeChat ID)

Skype: edmservicechina

E-mail: anselanedm@163.com

Website: www.anselanedm.com









## High speed drilling EDM

### Chuck

Picture	Code	Original P/No.	Dimension	Position	Application
	<b>E050</b>		0.30 - 4.0mm 0.15 - 4.0mm 0.30 - 6.5mm		Spanner drill chuck with T wrench
	<b>E050-Set</b>		0.30 - 4.0mm 0.15 - 4.0mm		Spanner drill chuck set with arbour & T wrench
	<b>E060</b>		0.0 - 3.0mm		Keyless drill chuck
	<b>E060-Set</b>		0.0 - 3.0mm		Keyless drill chuck set with arbour
	<b>E070</b>		0.0 - 3.0mm		Internal pressure connector ( Arbour )
	<b>E071</b>		0.0 - 3.0mm		Internal pressure connector ( Arbour ) for MAOMA edm
	<b>E080</b>		0.0 - 3.0mm		External pressure connector ( Arbour )
	<b>E080-Set</b>		0.15 - 3.0mm		Spanner drill chuck set with arbour & T wrench
			0.3 - 3.0mm		Keyless drill chuck set with arbour for OCEAN edm
	<b>E073</b>				Drill chuck Pistil type
	<b>E074</b>		Ø0.1 ~ 0.5mm; Ø0.5 ~ 1.2mm		Pistil
	<b>E090</b>				Drill chuck Pistil type
	<b>E010</b>				Connector for TOP edm

### Rubber Seals

Picture	Code	OD x H	For Tube Size	Application for Electrode tubes	Available
	<b>E040</b>	Dia 8 x 6	For 0.3 ~ 3.0	Seal Rubber For all machine	0
	<b>E041</b>	Dia 9 x 9	For 0.3 ~ 3.0	Seal Rubber For all machine	0
	<b>OMEGA</b>	Dia 12 x 6	For 0.3 ~ 3.0	Seal Rubber for Collet type ER16	0
	<b>E042</b>	Dia 7.5 x 10	For 0.3 ~ 3.0	Seal Rubber For all machine	0
			For 0.3 ~ 3.0	Spacer For all machine	0
			For 0.3 ~ 3.0	Collet For all machine	0

# ANSELAN PRECISION MACHINERY CO., LTD.

Address: No. 539 Wanjiaili Rd., Yuhua District, Changsha, 410019, China

Mobile: +86 - 18267497809 (WhatsApp ID/WeChat ID)

Skype: edmservicechina

E-mail: anselanedm@163.com

Website: www.anselanedm.com



## High speed drilling EDM

### Rotating Head

Picture	Code	Original P/No.	Dimension	Position	Application
					Rotating Head Assembly include 110V motor
					High Pressure Pump 110V Assembly Set
					Rotating Head Assembly include 110V motor
					Rotating Head Assembly include 24V motor
					Rotating Head Assembly include 24V motor
	BZ-103T				High Pressure Water Pump include 380V motor
					Motor Set for BZ-103T
	E116				Pipe Guide Holding Plate with 2 holes
	E117				Pipe Guide Holding Plate with 3 holes
					Pipe Guide Holding Plate 133x39x10.3
					Stepper Motor